

Below are two Colorado standard floor plans. We can modify floor plans to suit your individual requirements, please ask our sales team for further details. All of our homes are built to BS3632 (which includes all park homes and lodges) and come with a 10 year Goldshield structural guarantee.



40' x 20' (12.192m x 6.012m) 2 bedrooms, 1 bathroom & en-suite



44' x 22' (13.411m x 6.622m) 2 bedrooms, study, 1 bathroom, & en-suite

The purchase of a new home is one of the most important decisions that you will ever make. Here at Omar, we aim to ensure that your purchase meets all of your needs and expectations without the stress that such a major purchase normally brings. Omar are highly dedicated to quality assurance, the environment, leading edge design and product development. We have a wide range of floor plans, styles and interior décors available for you to choose from. We also offer a bespoke design service working with people to create your dream home. Our flexible floor layouts ensure that we can cater for all requirements, which is ideal for those with disabilities.

Why not arrange to visit our Show Centre at our Head Office in Brandon, Suffolk?

Show Centre Opening Hours:  
Monday to Friday: 9.30am – 4.30pm  
Saturday: 10.00am – 4.00pm

Omar Park Homes Ltd, Head Office & Show Centre,  
London Road, Brandon, Suffolk IP27 0NE

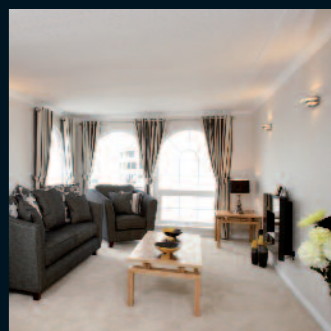
Tel: 01842 810673  
Email: [sales@omar.co.uk](mailto:sales@omar.co.uk)  
[www.omar.co.uk](http://www.omar.co.uk)

## OMAR® Head Office and Show Centre



# OMAR®

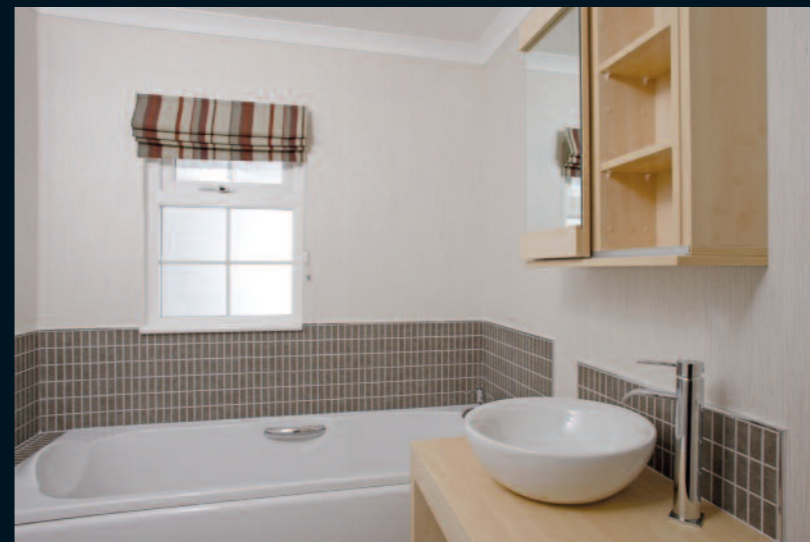
## Colorado Park Home



## Building Your Dreams

01842 810673 | [www.omar.co.uk](http://www.omar.co.uk)





# Colorado

Park Home

Omar have been producing the Colorado for over 40 years now and it is still one of the most popular homes in our range. Today's Colorado has a new layout incorporating a separate dining area, kitchen with utility room and walk through master bedroom with en-suite. The three arch windows which have become the Colorado's signature feature have been retained and continue to give the living room that extra feeling of space. New full-length feature windows have been added to the master bedroom really opening up the room and very much complimenting the new layout and décor. Glazed panel doors from the hallway into the lounge and from the lounge into the dining area, provide the home with a light and airy feel.

**ECO packs can be applied to any of our homes and include:**

- Intelligent heating controls
- LED lighting
- LOW E windows and doors
- Reduced water consumption dishwashers

**ECO extras available for all our homes:**

- Rainwater harvesting
- Air source heat pumps
- Solar water heating
- Solar photovoltaic's

If you are considering any of these options please feel free to contact us to discuss the suitability call **01842 810673** or **eco@omar.co.uk**

- PVCu double glazed windows (10 year frame / 5 year glazing warranty)
- 1 off large feature roof dormer
- Brick effect slips below windows
- Feature front door
- Corner Quoins
- Metrotile roof (40 year warranty)
- High pitch tiled roof with loft access
- Feature exterior light
- Gas central heating
- Hessian backed carpet with underlay
- Feature interior glazed panel between hall and lounge
- Modern Biarritz lounge suite
- Co-ordinating cabinet furniture
- Fully lined curtains throughout
- High gloss Mushroom coloured kitchen doors and drawers
- Eye level stainless steel single electric oven and extractor hood
- 4 burner gas hob
- Integrated fridge freezer, washing machine and dishwasher
- Feature full length windows to master bedroom
- Dining table and chairs
- Freestanding vanity unit to bathroom and en-suite



Please note: some of the photos in this brochure may include optional extras. We recommend that you contact a member of our sales team to highlight these options for you. We also reserve the right to change specification and layout so please contact us to discuss your individual requirements.