

Below are two Heritage standard floor plans. We can modify floor plans to suit your individual requirements, please ask our sales team for further details. All of our homes are built to BS3632 (which includes all park homes and lodges) and come with a 10 year Goldshield structural guarantee.



46' x 22' (14.021m x 6.622m) 2 bedrooms, study, 1 bathroom & en-suite



48' x 20' (14.630m x 6.012m) 2 bedrooms, study, 1 bathroom & en-suite

The purchase of a new home is one of the most important decisions that you will ever make. Here at Omar, we aim to ensure that your purchase meets all of your needs and expectations without the stress that such a major purchase normally brings. Omar are highly dedicated to quality assurance, the environment, leading edge design and product development. We have a wide range of floor plans, styles and interior décors available for you to choose from. We also offer a bespoke design service working with people to create your dream home. Our flexible floor layouts ensure that we can cater for all requirements, which is ideal for those with disabilities.

Why not arrange to visit our Show Centre at our Head Office in Brandon, Suffolk?

Show Centre Opening Hours:  
Monday to Friday: 9.30am – 4.30pm  
Saturday: 10.00am – 4.00pm

Omar Park Homes Ltd, Head Office & Show Centre,  
London Road, Brandon, Suffolk IP27 0NE

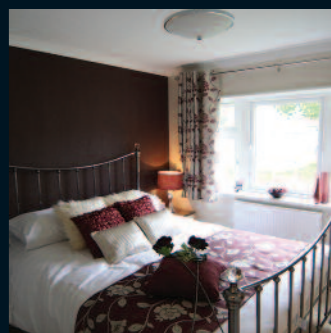
Tel: 01842 810673  
Email: [sales@omar.co.uk](mailto:sales@omar.co.uk)  
[www.omar.co.uk](http://www.omar.co.uk)

## OMAR® Head Office and Show Centre



# OMAR®

## Heritage Park Home



## Building Your Dreams

01842 810673 | [www.omar.co.uk](http://www.omar.co.uk)





# Heritage

Park Home

Our flagship model the Heritage, is our top of the range luxury park home with that little bit extra. Newly designed with an extensive high gloss kitchen, this home sets new standards in kitchen and bathroom design. Integrated appliances, eye-level oven and 5 burner gas hob along with pull-out magic corner cupboards are just a few of the features which the stunning gloss Ivory kitchen has to offer. The bathroom comes complete with a freestanding designer bath and beautiful vessel basin vanity unit. The en-suite to the master bedroom also has a large walk-in shower with overhead drench attachment. This beautiful home is everything that you could ask for and more in a top of the range park home with stunning interior and exterior looks.

- PVCu double glazed windows with Georgian bar (10 year frame / 5 year glazing warranty)
- 6 curved bay windows
- Metrotile roof (40 year warranty)
- High pitch tiled roof with loft access
- Stone effect Corner Quoins
- Feature front door with glazed side panels
- Feature pilasters to main entrance
- Feature exterior lights
- Gas central heating
- Belgium Chenille fabric lounge suite
- Dining table and chairs
- Co-ordinating cabinet furniture
- Hessian backed carpet with underlay
- Feature electric fire
- Gloss Ivory kitchen doors and drawers
- Stainless steel double electric oven with feature extractor
- 5 burner gas hob
- Integrated fridge freezer, washing machine and dishwasher
- Wall mounted headboards
- Fully lined curtains
- Freestanding bath
- Heated towel rails

**ECO packs can be applied to any of our homes and include:**

- Intelligent heating controls
- LED lighting
- LOW E windows and doors
- Reduced water consumption dishwashers

**ECO extras available for all our homes:**

- Rainwater harvesting
- Air source heat pumps
- Solar water heating
- Solar photovoltaic's

If you are considering any of these options please feel free to contact us to discuss the suitability call **01842 810673** or **eco@omar.co.uk**



Please note: some of the photos in this brochure may include optional extras. We recommend that you contact a member of our sales team to highlight these options for you. We also reserve the right to change specification and layout so please contact us to discuss your individual requirements.

