

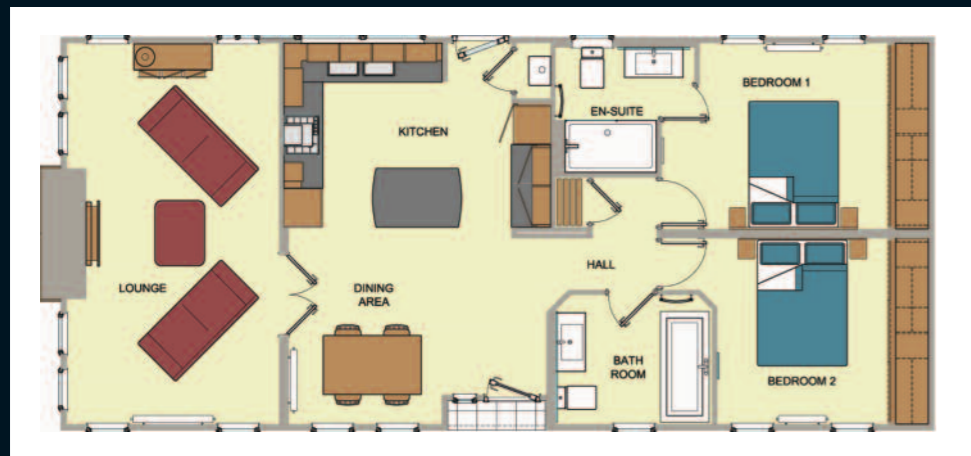
Below are two Ikon standard floor plans. We can modify floor plans to suit your individual requirements, please ask our sales team for further details. All of our homes are built to BS3632 (which includes all park homes and lodges) and come with a 10 year Goldshield structural guarantee.



Ikon Park Home



50' x 20' (15.240m x 6.012m) 2 bedrooms, 1 bathroom & en-suite



44' x 20' (13.411m x 6.012m) 2 bedrooms, 1 bathroom & en-suite



The purchase of a new home is one of the most important decisions that you will ever make. Here at Omar, we aim to ensure that your purchase meets all of your needs and expectations without the stress that such a major purchase normally brings. Omar are highly dedicated to quality assurance, the environment, leading edge design and product development. We have a wide range of floor plans, styles and interior décors available for you to choose from. We also offer a bespoke design service working with people to create your dream home. Our flexible floor layouts ensure that we can cater for all requirements, which is ideal for those with disabilities.



Head Office and Show Centre

Why not arrange to visit our Show Centre at our Head Office in Brandon, Suffolk?

Show Centre Opening Hours:
Monday to Friday: 9.30am – 4.30pm
Saturday: 10.00am – 4.00pm

Omar Park Homes Ltd, Head Office & Show Centre,
London Road, Brandon, Suffolk IP27 ONE

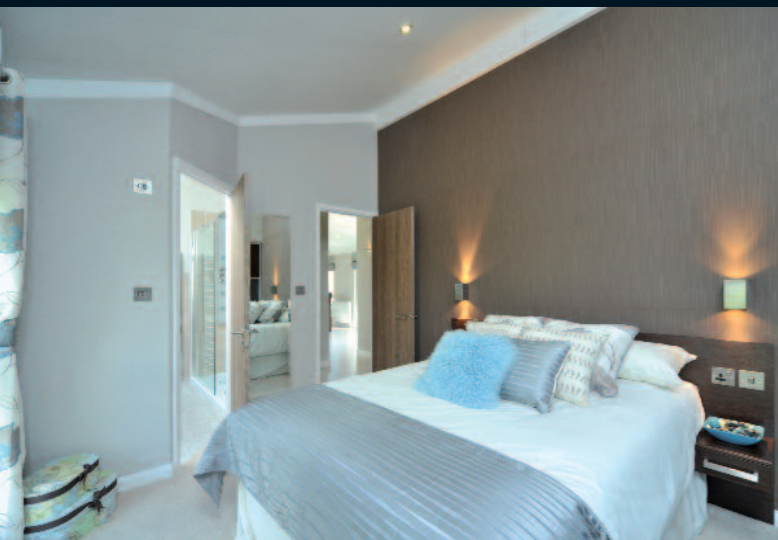
Tel: 01842 810673
Email: sales@omar.co.uk
www.omar.co.uk



Building Your Dreams

01842 810673 | www.omar.co.uk





Ikon

Park Home

Ikon by name, iconic in style, design and quality. The clean lines of the exterior and long slender windows allow natural light to gracefully flow through each room, whilst Cedar cladding highlights the front exterior chimney breast. High gloss doors with 'aircraft style' top-lockers and a large breakfast island really make a statement in the kitchen. The separate lounge has a modern chic feel and is accessed through double glass and walnut doors. It has elegant soft touch Chenille sofas in a soothing Mink colour, which contrast beautifully with the Taupe and Turquoise Roman blinds and shaggy rug. In the bathroom there is a freestanding bath and elegant 'butler style' hand basin whilst the en-suite boasts a fully tiled walk-in column shower. If you're looking for a home to stand the test of time in style, design and quality look no further.

ECO packs can be applied to any of our homes and include:

- Intelligent heating controls
- LED lighting
- LOW E windows and doors
- Reduced water consumption dishwashers

ECO extras available for all our homes:

- Rainwater harvesting
- Air source heat pumps
- Solar water heating
- Solar photovoltaic's

If you are considering any of these options please feel free to contact us to discuss the suitability call **01842 810673** or **eco@omar.co.uk**

- PVCu double glazed windows (10 year frame / 5 year glazing warranty)
- Fully vaulted ceiling
- Metrotile roof (40 year warranty)
- Cedar clad chimney breast exterior feature
- Laminate floor in living areas
- Hessian backed carpet with underlay to bedrooms
- 2 x 2 seater elegant 'soft touch' Chenille sofas in a soothing Mink colour
- Large Walnut table and four faux leather style chairs
- Co-ordinating cabinet furniture
- Fabric Roman blinds to all rooms except kitchen
- Kitchen island with high stools
- Anthracite Grey and high gloss White kitchen
- Stainless steel eye level double oven
- 4 burner gas hob with extractor hood
- Integrated fridge freezer, washing machine and dishwasher
- Freestanding bath to bathroom
- Elegant 'butler style' hand basins to bathroom and en-suite
- Heated towel rails to bathroom and en-suite
- Porcelanosa tiles to kitchen and bathroom



Please note: some of the photos in this brochure may include optional extras. We recommend that you contact a member of our sales team to highlight these options for you. We also reserve the right to change specification and layout so please contact us to discuss your individual requirements.