

Below are two Regency standard floor plans. We can modify floor plans to suit your individual requirements, please ask our sales team for further details. All of our homes are built to BS3632 (which includes all park homes and lodges) and come with a 10 year Goldshield structural guarantee.



40' x 20' (12.192m x 6.012m) 2 bedrooms, utility, 1 bathroom & en-suite



44' x 20' (13.716m x 6.012m) 2 bedrooms, study, 1 bathroom & en-suite

The purchase of a new home is one of the most important decisions that you will ever make. Here at Omar, we aim to ensure that your purchase meets all of your needs and expectations without the stress that such a major purchase normally brings. Omar are highly dedicated to quality assurance, the environment, leading edge design and product development. We have a wide range of floor plans, styles and interior décors available for you to choose from. We also offer a bespoke design service working with people to create your dream home. Our flexible floor layouts ensure that we can cater for all requirements, which is ideal for those with disabilities.

Why not arrange to visit our Show Centre at our Head Office in Brandon, Suffolk?

Show Centre Opening Hours:
Monday to Friday: 9.30am – 4.30pm
Saturday: 10.00am – 4.00pm

Omar Park Homes Ltd, Head Office & Show Centre,
London Road, Brandon, Suffolk IP27 0NE

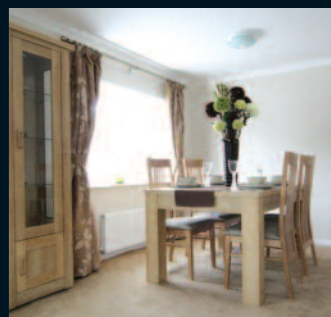
Tel: 01842 810673
Email: sales@omar.co.uk
www.omar.co.uk

OMAR® Head Office and Show Centre



OMAR®

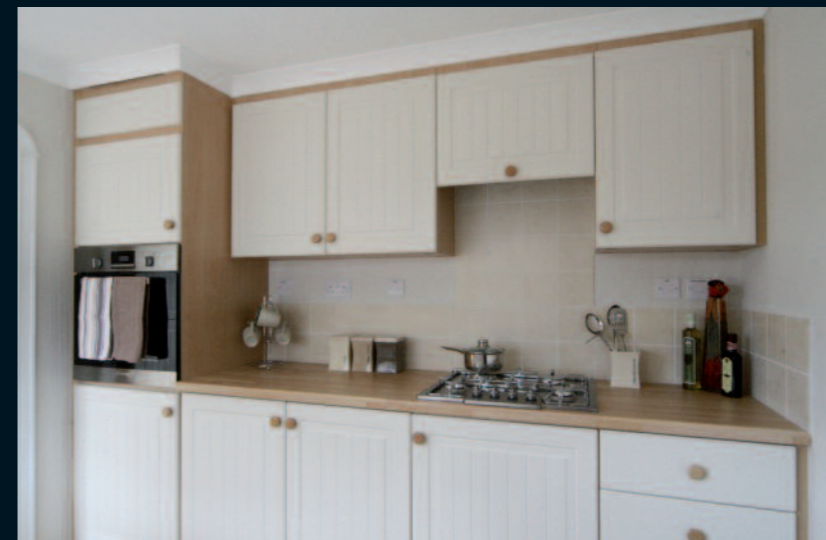
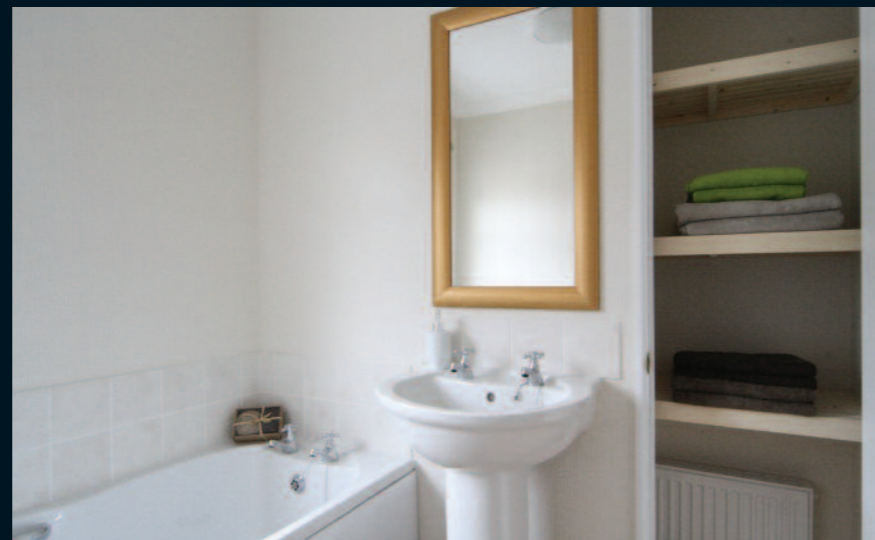
Regency Park Home



Building Your Dreams

01842 810673 | www.omar.co.uk





Regency

Park Home

The Regency is a fully equipped and affordable park home by Omar. In spite of its very reasonable price tag, it boasts box bay windows with Georgian bar, corner quoins, fully integrated appliances and a feature dormer with its exceptional Omar build quality and interior design, the Regency is in a class of its own. With more than ten different floor plans available including three bedroom models, utility rooms, studies, en-suite shower rooms and walk-in wardrobes, there is a layout to suit everyone. Two large box bay windows to the lounge and diner add depth to the rooms, creating extra space to an already spacious home. Lounge and dining room furniture, fully fitted kitchen, bathroom and bedroom furniture and even colour co-ordinated curtains are all included. This home is great value for money without compromising on quality and style.

- PVCu double glazed windows (10 year frame / 5 year glazing warranty)
- Georgian bar windows throughout including 2 box bay windows to front
- 1 off feature roof dormer
- Corner Quoins
- Feature brick slips below windows
- Feature lintel and pilasters
- Feature exterior light
- Metrotile roof (40 year warranty)
- Gas Central heating
- Fitted carpet throughout
- Fully lined curtains
- Co-ordinating furniture including freestanding tall display cabinet
- Extending dining table and chairs
- Zen Cactus lounge suite
- Integrated fridge freezer, washing machine and dishwasher
- Stainless steel single electric oven with extractor hood
- 4 burner gas hob with integrated hood
- Airing cupboard in bathroom
- Wall mounted headboards

ECO packs can be applied to any of our homes and include:

- Intelligent heating controls
- LED lighting
- LOW E windows and doors
- Reduced water consumption dishwashers

ECO extras available for all our homes:

- Rainwater harvesting
- Air source heat pumps
- Solar water heating
- Solar photovoltaic's

If you are considering any of these options please feel free to contact us to discuss the suitability call **01842 810673** or **eco@omar.co.uk**



Please note: some of the photos in this brochure may include optional extras. We recommend that you contact a member of our sales team to highlight these options for you. We also reserve the right to change specification and layout so please contact us to discuss your individual requirements.