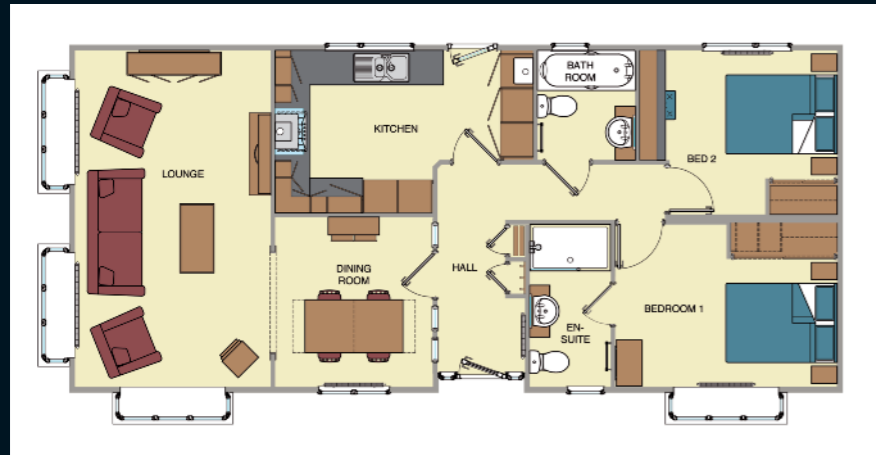


Below are two Sheringham standard floor plans. We can modify floor plans to suit your individual requirements, please ask our sales team for further details. All of our homes are built to BS3632 (which includes all park homes and lodges) and come with a 10 year Goldshield structural guarantee.



42' x 20' (12.802m x 6.012m) 2 bedrooms, 1 bathroom & en-suite



44' x 20' (13.411m x 6.012m) 2 bedrooms, 1 bathroom & en-suite

The purchase of a new home is one of the most important decisions that you will ever make. Here at Omar, we aim to ensure that your purchase meets all of your needs and expectations without the stress that such a major purchase normally brings. Omar are highly dedicated to quality assurance, the environment, leading edge design and product development. We have a wide range of floor plans, styles and interior décors available for you to choose from. We also offer a bespoke design service working with people to create your dream home. Our flexible floor layouts ensure that we can cater for all requirements, which is ideal for those with disabilities.

Why not arrange to visit our Show Centre at our Head Office in Brandon, Suffolk?

Show Centre Opening Hours:
Monday to Friday: 9.30am – 4.30pm
Saturday: 10.00am – 4.00pm

Omar Park Homes Ltd, Head Office & Show Centre,
London Road, Brandon, Suffolk IP27 0NE

Tel: 01842 810673
Email: sales@omar.co.uk
www.omar.co.uk

OMAR® Head Office and Show Centre



OMAR®

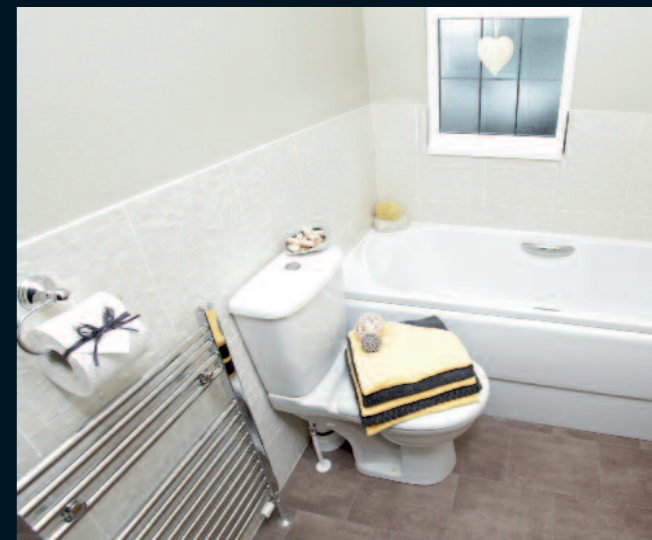
Sheringham Park Home



Building Your Dreams

01842 810673 | www.omar.co.uk





Sheringham

Park Home

The Sheringham is a traditionally styled park home with a Tudor effect exterior. The interior layout benefits from a separate dining area whilst the lounge has a curved, semi-vaulted ceiling which gives a feeling of space. Light fabrics throughout with splashes of colour compliment this home making it feel elegant and desirable. The kitchen boasts contrasting colours with Olive coloured Shaker style units with a Westminster Oak carcass and Ebony block worktop. The bathroom and en-suite are half tiled with the en-suite having the additional luxury of a large fully tiled walk-in shower.

- PVCu double glazed windows (10 year frame / 5 year glazing warranty)
- 4 large box bay windows with square leading
- Tudor beams to gables and dormers
- Black feature front door with glazed panels
- Feature exterior lights
- Metrotile roof (40 year warranty)
- 3 seater sofa and 2 matching chairs in Belgium Chenile fabric
- Pinch pleat fully lined curtains with tiebacks
- Feature stone effect fireplace and fire
- Contrasting kitchen with Olive coloured Shaker style doors and Westminster Oak carcass
- Built-in eye level electric oven
- Black glass feature extractor fan
- Fully integrated branded appliances
- Porcelanosa tiles in kitchen and bathrooms
- Sliding wardrobe doors to both bedrooms
- Large, fully tiled walk-in shower to en-suite
- Heated towel rails
- Vanity unit with semi-inset basin to bathroom and en-suite
- Bed sets with contrasting headboards and bed runners

ECO packs can be applied to any of our homes and include:

- Intelligent heating controls
- LED lighting
- LOW E windows and doors
- Reduced water consumption dishwashers

ECO extras available for all our homes:

- Rainwater harvesting
- Air source heat pumps
- Solar water heating
- Solar photovoltaic's

If you are considering any of these options please feel free to contact us to discuss the suitability call **01842 810673** or **eco@omar.co.uk**



Please note: some of the photos in this brochure may include optional extras. We recommend that you contact a member of our sales team to highlight these options for you. We also reserve the right to change specification and layout so please contact us to discuss your individual requirements.