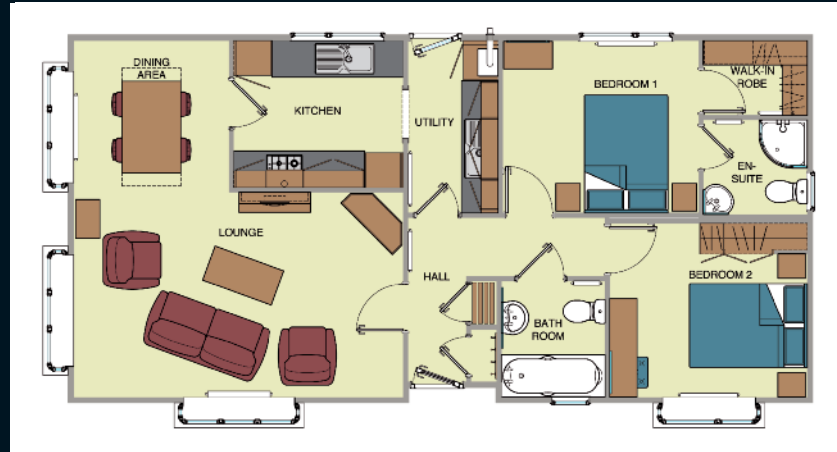


Below are two Tudor standard floor plans. We can modify floor plans to suit your individual requirements, please ask our sales team for further details. All of our homes are built to BS3632 (which includes all park homes and lodges) and come with a 10 year Goldshield structural guarantee.



**40' x 20' (12.192m x 6.012m) 2 bedrooms, utility, 1 bathroom & en-suite**



**40' x 20' (12.192m x 6.012m) 2 bedrooms, 1 bathroom & en-suite**

The purchase of a new home is one of the most important decisions that you will ever make. Here at Omar, we aim to ensure that your purchase meets all of your needs and expectations without the stress that such a major purchase normally brings. Omar are highly dedicated to quality assurance, the environment, leading edge design and product development. We have a wide range of floor plans, styles and interior décors available for you to choose from. We also offer a bespoke design service working with people to create your dream home. Our flexible floor layouts ensure that we can cater for all requirements, which is ideal for those with disabilities.

Why not arrange to visit our Show Centre at our Head Office in Brandon, Suffolk?

Show Centre Opening Hours:  
Monday to Friday: 9.30am – 4.30pm  
Saturday: 10.00am – 4.00pm

Omar Park Homes Ltd, Head Office & Show Centre,  
London Road, Brandon, Suffolk IP27 ONE

Tel: 01842 810673  
Email: [sales@omar.co.uk](mailto:sales@omar.co.uk)  
[www.omar.co.uk](http://www.omar.co.uk)

**OMAR**  
Head Office and Show Centre



**OMAR**

Tudor Park Home



Tudor  
by Omar



Building Your Dreams

01842 810673 | [www.omar.co.uk](http://www.omar.co.uk)





# Tudor

## Park Home

The Tudor offers a traditional and timeless feel at an affordable price. The lounge has a luxurious feel from the rich Aubergine floral curtains, and the soft Belgium Chenille sofa and chairs. The dining area is practical and stylish with the large Oak effect dining table and chairs and matching coffee table. The kitchen is fitted with integrated appliances and is finished in soft pastel Cream tones. Both bedrooms come complete with matching bed sets and headboards which compliment the curtains perfectly. The master bedroom also comes with a handy walk-in wardrobe and a striking fully tiled corner shower to the en-suite. The elegant front exterior comes with two box bay windows and feature dormers which add to the sense of space and the Tudor style beams give this home a classic exterior presence.

### ECO packs can be applied to any of our homes and include:

Intelligent heating controls  
LED lighting  
LOW E windows and doors  
Reduced water consumption dishwashers

### ECO extras available for all our homes:

Rainwater harvesting  
Air source heat pumps  
Solar water heating  
Solar photovoltaic's

If you are considering any of these options please feel free to contact us to discuss the suitability call **01842 810673** or **eco@omar.co.uk**

- PVCu 28mm double-glazed windows (10 year frame / 5 year glazing warranty)
- Four half astragal multi pane Georgian bar feature bay windows
- Twin dormers with feature Tudor style beams
- Metrotile roof (40 year warranty)
- Satin textured fully lined curtains and retainers
- Matching bedroom sets including headboards and bed runners
- Gas central heating
- Cream pastel coloured kitchen doors and drawers
- Fully integrated fridge freezer, washing machine and dishwasher
- 4 burner gas hob
- Built-in single electric oven
- Built-in extractor hood
- Walk-in wardrobe to master bedroom
- Fully tiled corner shower to en-suite
- Oak effect dining table and chairs, with matching coffee table
- Fitted carpet throughout
- Feature electric fire and fireplace suite with Brass frame
- Porcelanosa tiles to bathroom and en-suite
- Lounge suite in soft Belgium Chenille
- Airing cupboard



Please note: some of the photos in this brochure may include optional extras. We recommend that you contact a member of our sales team to highlight these options for you. We also reserve the right to change specification and layout so please contact us to discuss your individual requirements.